

Our SpeedCheck™ displays come with everything you will need to get them installed, except the pole.

Our full SpeedCheck Display line includes, Driver Feed Back Displays, Changeable Speed Limit Displays, Speed Limit Alert™ Displays and our TrafficFlow Manager™. These displays can support permanent-mounting, semi-permanent mounting, portable-mounting and trailer-mounting options.

Permanent-mount or pole-mount displays ship with standard brackets, using banding for easy installation on your pole. While the standard banding brackets are most widely used, we offer additional mounting options, including:

- Tilt brackets for locations with severe road grades or displays to be mounted over 12 feet.
- QuickChange™ brackets for semi-permanent installations.
- Brackets for mounting solar systems on the side or the top of the pole.
- Portable options for mounting displays on a stand with a one-inch receiver, or on a trunk with suction feet. We also offer a trailer-mounted version.

Permanent mounting options

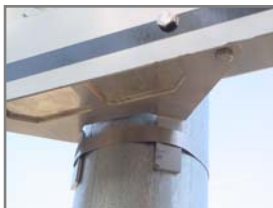
Information Display Company has designed permanent mounting options for nearly every possible scenario. Once mounted, our extremely durable SpeedCheck displays support a wind rating of 90 MPH.

Standard brackets

These SpeedCheck display brackets use banding to for mounting to your 2.5 to 6 inch diameter poles. We recommend round poles, although some customers have successfully used wooden posts.

Front View

Standard Bracket - top



Rear View

Standard Brackets top and bottom



U-Bolt

Alternative to banding



Tilt brackets

These brackets allow the display to tip up or down when it is mounted at 12 feet or higher, or for maximum visibility in areas with steep grades. Tilt brackets can be installed at the top of the display, or on both top and bottom before attaching to the pole. These brackets can be used on 2.5 to 6 inch diameter poles.

Semi-permanent mounting – QuickChange

This is the perfect solution when you have a limited budget, but more than one area requiring traffic calming since the display can be moved quickly from one location to another. If at a later date you decide to keep the display at one particular location, the QuickChange bracket is completely secure as a permanent solution.

QuickChange brackets for pole-mounted displays

The QuickChange bracket system can be used with any of our permanent displays, attaching to a sign pole or power pole and secured with a padlock.

Front View

Without Pad Lock



Front View

Without Pad Lock



QuickChange brackets for trailer-mounted displays

QuickChange brackets maximize versatility and extend the reach of a limited budget by allowing you to use your SpeedCheck display in multiple locations. With the QuickChange brackets your display can be on the trailer one day and mounted on a neighborhood pole the next.

SpeedCheck speed display installations

Our Standard, Tilt and QuickChange pole-mount brackets require a round pole surface.

Pole-mount with flashers

Our displays can be mounted with a variety of signs, and combined with flasher and strobe options. Our display can control the times of operation and supply the power.



Pole-mount with wooden posts

For a single wooden post-mount, we recommend attaching the display to a round pipe first, then attaching the pipe to the post to prevent the display from rotating. Another option, as shown in the pictures in the center and far right, is to mount to wooden posts on both sides of the display.



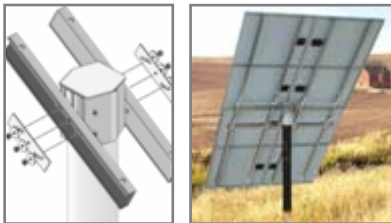
SpeedCheck displays with solar power

When considering a solar-powered solution, you will need to plan the height and size of your pole.

- We recommend at least a 4-inch diameter pole to support solar panels since they can easily catch the wind and act like a sail.
- The bottom of your SpeedCheck display needs to be six to eight feet from ground to help minimize vandalism and to meet FHWA MUTCD standards.
- You can mount the battery box on behind the backside of the fixed sign to save pole real estate and neatly tuck the equipment out of sight.
- A speed limit sign requires 30"x 36" with one foot of separation between the display and the top of pole solar panel racks.
- For pole space allocation when mounting solar panels on the side of the pole:
 - a) Allow 2 feet when using our SpeedCheck solar brackets.
 - b) For larger sized panels we use UniRack brackets. Allow 4 feet to support 85 to 130 watts, and 6 feet to support 150 watts or more.

Solar installations

Top-mounted solar panel



Side-mounted solar panel



Pole-mounted battery box



Portable Display Mounting Options

Our portable displays can be mounted on a collapsible stand or attached via suction cups to the trunk or roof of a vehicle. The custom-made 3 1/2" suction mounts are nearly impossible to remove without using their built-in vacuum release valves.

SpeedCheck Portable displays are easy to transport and quick to set up.

Portable displays are a perfect low-cost option. Because they are so easy to use and to transport, portable displays are used on a temporary basis in wide range of applications, such as hazard zones, special events, work zones, school zones and for neighborhood speeding concerns.

- Portable displays are equipped with a deep cycle battery, supplying enough power for five to seven days of daily operation.
- The stand-mount and trunk-mount options can be set up within minutes, allowing for virtually instant response to complaints or urgent needs.
- The sign face and stand fold to allow the display to fit in the trunk of a car.
- Trunk-mounted displays can get power from the vehicle with an adapter plug for the cigarette lighter, or from a deep cycle battery placed in the trunk.

The trailer-mounted display is ideal when you want to leave the display in place for longer periods and require more security. With solar assist, the trailer-mounted display can operate up to six weeks without recharging.

The pictures below demonstrate the Driver Feedback portable displays. SpeedCheck Changeable Speed Limit, Speed Limit Alert and TrafficFlow Manager are also available with portable-mount or trailer-mount.

Stand-mount



Trunk-mount



Trailer-mount

